

# 6110 / 6120 AC Inlets – For “Hot” Connections



6110



6120

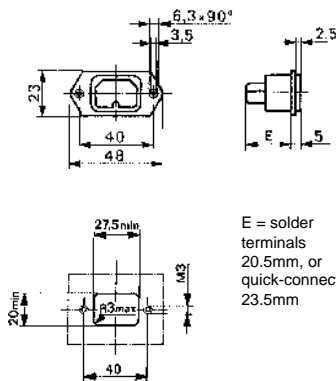
- For “hot” connections 120°C (6110) or 155°C (6120), Protection Class I
- Screw mount from front or rear, or snap-in mount from front
- Solder terminals .138 x .032" (3.5 x 0.8mm) or quick-connect terminals .187 x .032" (4.8 x 0.8mm) or .250 x .032" (6.3 x 0.8mm)
- 0.5 Nm torque required for M3 screws for screw-on type
- For ac inlet with RFI filter see 5110, page 52
- For insulation cover and cord retaining clamp, see page 27
- Material: thermoplastic, polyamid 6.6 (6110 series: UL 94V-0)
- Prongs and terminals: brass, tin-plated

UL	recognition	15A/250V	File #E96454
CSA	certification	15A/250V	File #LR38456
VDE	approval	10A/250V	File #3173, expert report (6110.4XXX and 6120)
VDE	approval	10A/250V	File #77561 (6110.3XXX)
SEMKO	approval	10A/250V	} File numbers on request
SEV	approval	10A/250V	



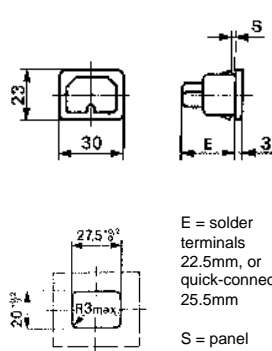
Standards: EN 60320; IEC 320/C16

6110 Screw-on



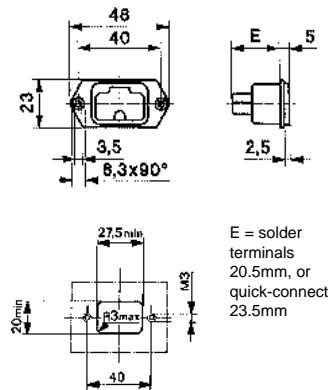
E = solder terminals 20.5mm, or quick-connect 23.5mm

6110 Snap-in



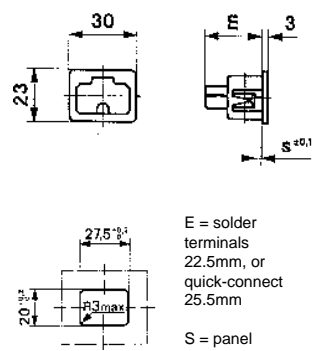
E = solder terminals 22.5mm, or quick-connect 25.5mm  
S = panel thickness 1.0, 1.2, 1.5, 2.0, 2.5, 3.0mm

6120 Screw-on



E = solder terminals 20.5mm, or quick-connect 23.5mm

6120 Snap-in



E = solder terminals 22.5mm, or quick-connect 25.5mm  
S = panel thickness 1.5, 2.5, 3.0mm

### Order Numbers (type)

6110, 120°C			6120, 155°C		
Snap-in	Screw-on	Terminal Type	Snap-in	Screw-on	Terminal Type
6110.41XX* (6110-41/...)	6110.3100 (6110-31)	solder .138" x .032" (3.5 x 0.8mm)	6120.51XX (6120-51/...)	6120.3100 (6120-31)	solder .138" x .032" (3.5 x 0.8mm)
6110.42XX* (6110-42/...)	6110.3200 (6110-32)	quick-connect .187" x .032" (4.8 x 0.8mm)	6120.53XX (6120-53/...)	6120.3300 (6120-33)	quick-connect .250" x .032" (6.3 x 0.8mm)
6110.43XX (6110-43/...)	6110.3300 (6110-33)	quick-connect .250" x .032" (6.3 x 0.8mm)			

XX = panel thickness 1.0, 1.2, 1.5, 2.0, 2.5, 3.0mm (e.g. 6110.4110 = 1.0mm)

To order rivet mount types for series 6110, change the fifth digit in the part number from a "3" to a "9" (e.g. 6110.9100, etc.)

\*Contact Schurter for order minimum.

XX = panel thickness 1.5, 2.5, 3.0mm (e.g. 6120.5130 = 3.0mm)

\*Contact Schurter for order minimum.