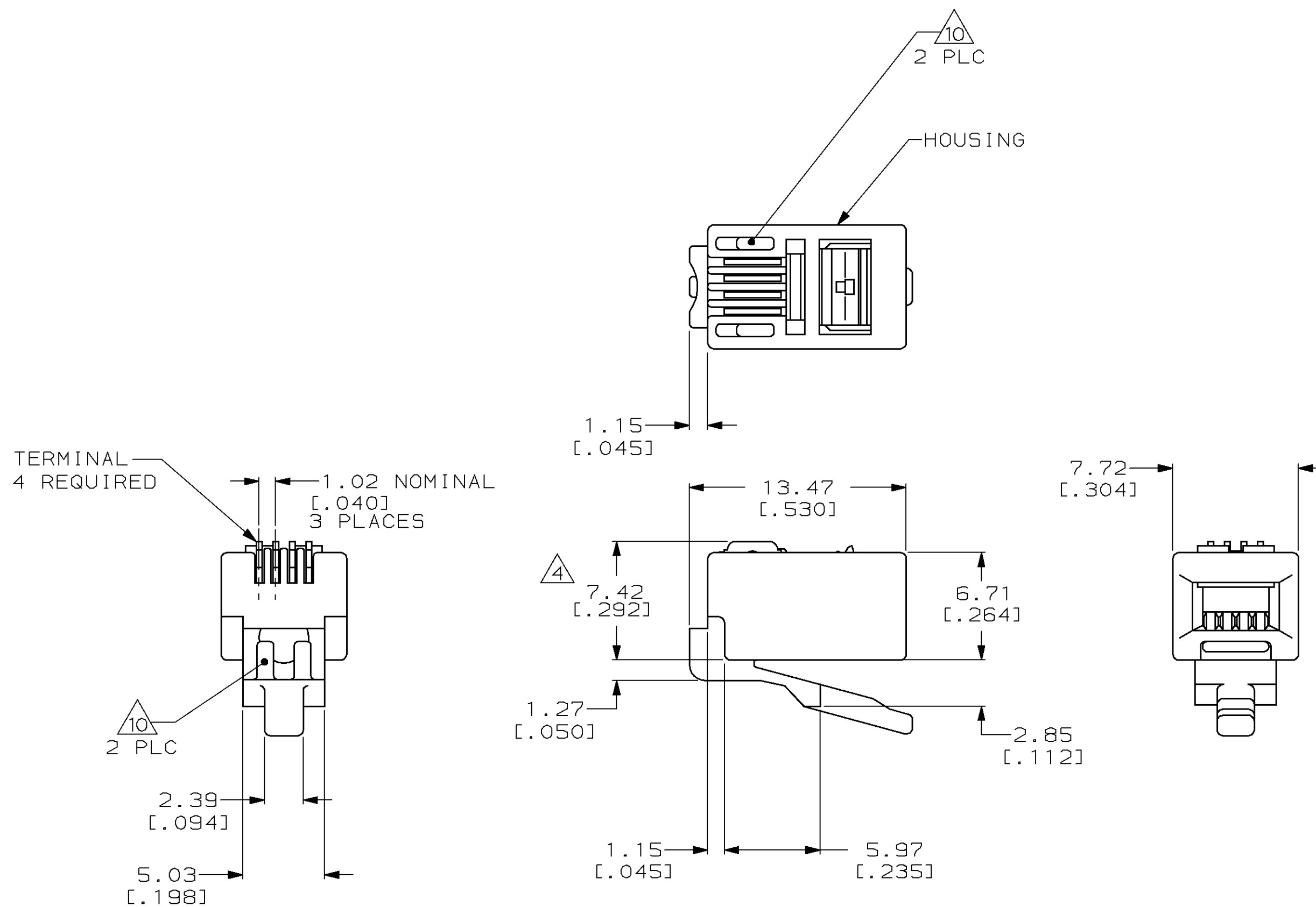


LOC	DIST	P	F	REVISIONS			
ZONE	LTR	DESCRIPTION	DATE	APPD	DS	EL	
AA	22			V	OBS: 6/3; EC 0502-0843-97	20MAY98	

- 1 DIMENSIONS ARE MAXIMUM UNLESS OTHERWISE SPECIFIED.
- 2 MATERIAL: HOUSING-POLYCARBONATE, CLEAR. TERMINAL-0.36 [.014] THICK PHOSPHOR BRONZE PLATED WITH 1.27µm [.000050] THICK GOLD IN LOCALIZED GOLD PLATE AREA, GOLD FLASH OVER THE REMAINDER, OVER 2.54µm [.000100] THICK NICKEL UNDERPLATE.
- 3. PLUG WILL ACCEPT 26 OR 28 AWG STRANDED WIRE, 0.99 [.039] MAX INSULATION DIAMETER, WITH A 2.29 X 4.83 [.090 X .190] OVAL JACKET.
- 4 TERMINATED DIMENSION 6.15 [.242] MAXIMUM.
- 6 PACKAGED 10,000 ASSEMBLES PER CARTON.
- 7 PACKAGED 1000 ASSEMBLIES PER CARTON.
- 8 PACKAGED 100 ASSEMBLIES PER BOX, 10 BOXES PER CARTON.
- 9 PACKAGED 25 ASSEMBLIES PER POLYBAG, 40 POLYBAGS PER CARTON.
- 10 REELED PRODUCT ON STRIP DOES NOT HAVE VOID CORING ILLUSTRATED ON THIS DRAWING.



9	5-641334-7
8	5-641334-3
7	5-641334-2
6	5-641334-1
REELED 10	641334-1
PACKAGED	PART NO

DO NOT SCALE PRINT. UNLESS SPECIFIED DIMENSIONS IN mm [INCHES] TOLERANCES ON: 2 PLC DEC ± - 1 3 PLC DEC ± - ANGLES ± -	DR 8-31-93 YTP/UTA CHK 9-15-93 C.WHITT APPD 9-20-93 J.TONEY APPD 9-20-93 H.MCGRATH PRODUCT SPEC 108-1163 APPLICATION SPEC 114-6016 WEIGHT -	AMP AMP Incorporated Harrisburg, PA 17105-3608 NAME MODULAR PLUG ASSEMBLY, 4 POSITION, HANDSET SIZE CAGE CODE DRAWING NO C 00779 C=641334 SCALE 4:1 SHEET 1 OF 1	
---	---	--	--

THIS DRAWING IS A CONTROLLED DOCUMENT FOR AMP INCORPORATED. IT IS SUBJECT TO CHANGE AND THE CONTROLLING ENGINEERING ORGANIZATION SHOULD BE CONTACTED FOR THE LATEST REVISION.