

**STEREOZOOM 0.7X THRU 3.0X VARIABLE POWER POD,  
CAT. NO. 31-26-94**

Key	Description	Part No.	Key	Description	Part No.
1	Eyepiece Ring	312694-175	53	Magnification Knob Ass'y	312694-288
2	2-64T x 1/16 Set Screw	312701-379ND	54	Washer F-304	90008-367
3	Eyepiece Adapter	312694-285	55	Set Screw	312694-236ND
4	Dust Seal Cap	312694-259	56	Washer	312694-141
5	Set Screw 4-48	315153-120ND	*57	Drive Gear Shaft	312694-139
6	Dust Cover	312694-052	*58	F-305 Washer	90008-368
7	Dust Seal	312694-286	*59	Objective Drive Gear	312694-120
8	Eyepiece Adj. Ring	312694-129	61	Set Screw	312694-229ND
9	Mirror Housing	312694-284	62	Lead Screw & *Gear Ass'y L.H.	312694-201
10	Ret. Ring	312694-321		Lead Screw & Gear Ass'y *R.H. (Not Exploded)	312694-266
11	Adapter	312694-269	63	2-56 x .312 LG Screw	312694-292ND
12	Dust Seal Washer	312694-234	64	F-119 Washer F-132 Washer (Not Shown)	90008-124 90008-142
13	Pin Spring	312799-171ND	65	Cover	312799-178
*14	Body Tube - Must be assembled with Key #43	312694-277	66	Cover Spring	312694-352
*15	Mirror Mount Right Mirror Mount Left (Not Exploded)	312694-361 312694-362	67	Pad "B"	312694-105
16	Mirror Clip C	312694-341	68	Objective Mount Cover	312799-178
17	Mirror B	312694-039	69	Cell Mount A Pad Ass'y	312694-348
18	Eyepiece Mount Support	312799-102	70	Lens CD Mount	312799-274
19	Tru-Arc Ret. 5133-25	312694-111ND	71	CD Lens Ass'y	312694-037
20	F-310 Spring Washer	90008-378	73	2-64 x 7/32 LG Spline Set Screw (8)	312694-310ND
21	Screw, 6-32 x 3/8	312694-392ND	74	Guide Bar	312694-106
22	Bearing Screw (4)	312694-118	75	Screw, 8-36 x 9/32	312694-327ND
23	F-306 Washer	90008-369	76	Lens E - F Ass'y	312694-029
24	Lock Nut	312694-322	77	Objective Cover	312694-354
25	Gear Drive Support	312799-107	78	Objective Driven Gear R.H.	312694-264
26	Ball .1562φ (4)	312694-152ND	79	Pivot Screw B	312799-171ND
27	Lead Screw Mount	312694-339	80	Mirror Clip C	312694-341
28	Screw, 6-40 x 3/8	312694-328ND	81	Screw, 6-40 x 3/8	312694-324ND
29	F-306 Washer	90008-369	82	Mirror C	312694-040
30	Lens E - F Ass'y	312694-029	83	Mirror D	312694-041
31	Retainer	312692-102			
32	E - F Lens Mount	312694-340			
33	Screw, 2-56 x 3/16 (2)	312694-302ND			
34	Retainer	312692-102			
35	Cover Gasket	312694-312			
36	Screw, 6-40 x 29/32	312694-325ND			
37	Screw, 6-32 x 9/32	312694-323ND			
38	Pivot Screw "A"	312694-144			
39	F-309 Washer	90008-377			
40	F-108 Washer	90008-281			
41	Screw, 4-48 x 3/16	312694-326ND			
42	F-120	90008-125			
43	EP Mount Right (Refer to Key #14)	312799-116			
	*EP Mount Left (Not Exploded)	312799-115			
44	Mirror A	312694-038			
45	2-64 x 1/8 LG Screw	312694-301ND			
46	Mirror Clip C	312694-341			
47	Mount AB	312799-272			
48	Objective Driven Gear (2)	312694-121			
49	Gear Lock Nut	312694-169			
50	Cell Mount B & Pad Ass'y	312694-351			
52	AB Lens Ass'y	312694-023			

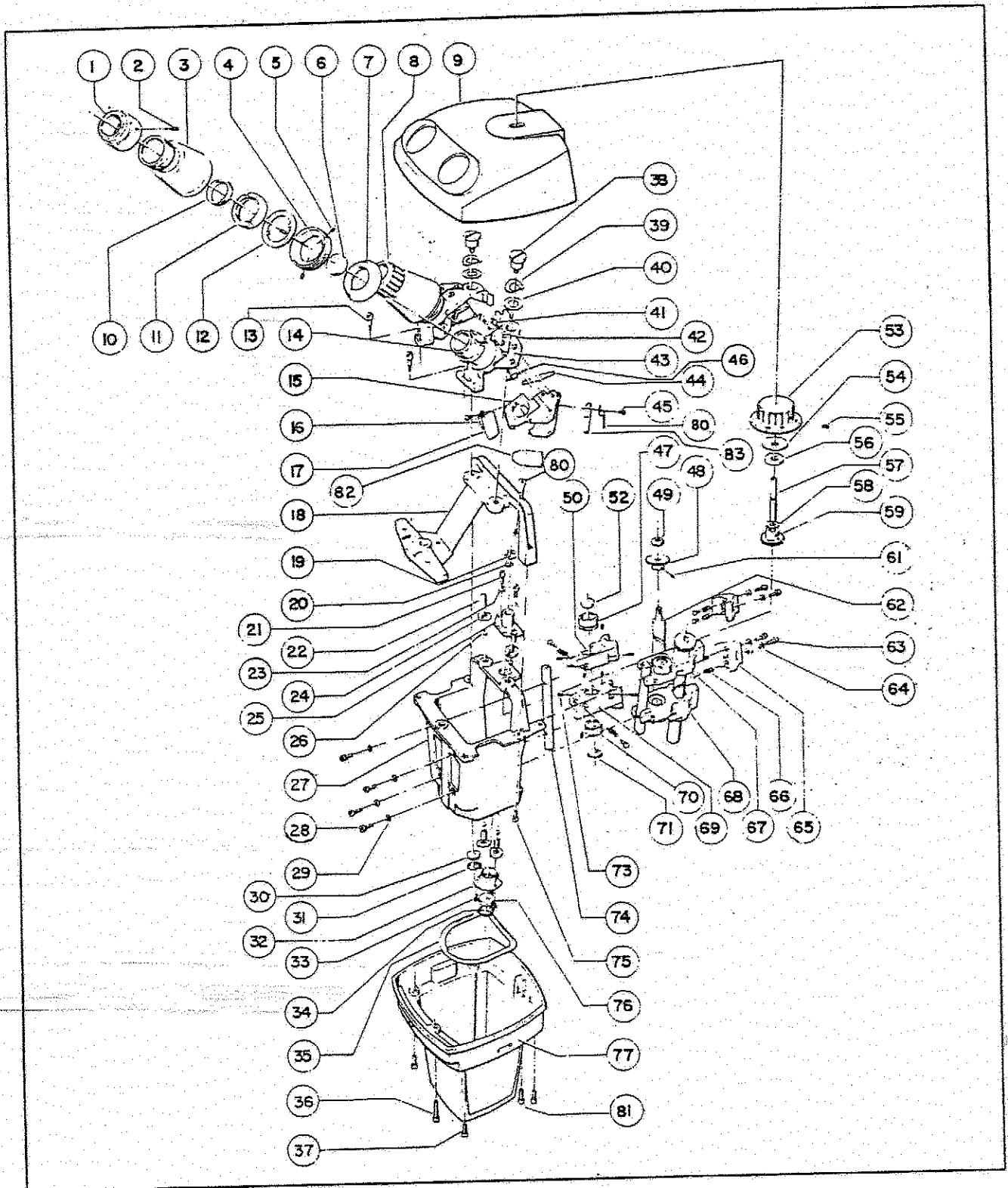
\*Sold in Ass'y Only

**STEREOZOOM 1.0X thru 2.5X VARIABLE POWER POD,  
CAT. NO. 31-26-93**

All parts are similar to those for the 0.7X thru 3.0X Variable Power Pod except

Key	Description	Part No.
9	Mirror Housing	312693-134
53	Magnification Knob Ass'y	312693-129
*57)		
*58)		
*59)	Drive Gear & Shaft Ass'y	312693-132
*60)		

\*Sold in Ass'y Only



STEREOZOOM 0.7X thru 3.0X VARIABLE POWER POD, CAT. NO. 31-26-94

**STEREOZOOM 0.7X THRU 3.0X VARIABLE POWER POD,  
CAT. NO. 31-26-94**

Key	Description	Part No.	Key	Description	Part No.
1	Eyepiece Ring	312694-175	53	Magnification Knob Ass'y	312694-288
2	2-64T x 1/16 Set Screw	312701-379ND	54	Washer F-304	90008-367
3	Eyepiece Adapter	312694-285	55	Set Screw	312694-236ND
4	Dust Seal Cap	312694-259	56	Washer	312694-141
5	Set Screw 4-48	315153-120ND	*57	Drive Gear Shaft	312694-139
6	Dust Cover	312694-052	*58	F-305 Washer	90008-368
7	Dust Seal	312694-286	*59	Objective Drive Gear	312694-120
8	Eyepiece Adj. Ring	312694-129	61	Set Screw	312694-229ND
9	Mirror Housing	312694-284	62	Lead Screw & *Gear Ass'y L.H.	312694-201
10	Ret. Ring	312694-321		Lead Screw & Gear Ass'y *R.H. (Not Exploded)	312694-266
11	Adapter	312694-269	63	2-56 x .312 LG Screw	312694-292ND
12	Dust Seal Washer	312694-234	64	F-119 Washer	90008-124
13	Pin Spring	312799-171ND		F-132 Washer (Not Shown)	90008-142
*14	Body Tube - Must be assembled with Key #43	312694-277	65	Cover	312799-178
*15	Mirror Mount Right Mirror Mount Left (Not Exploded)	312694-361	66	Cover Spring	312694-352
16	Mirror Clip C	312694-341	67	Pad "B"	312694-105
17	Mirror B	312694-039	68	Objective Mount Cover	312799-178
18	Eyepiece Mount Support	312799-102	69	Cell Mount A Pad Ass'y	312694-348
19	Tru-Arc Ret. 5133-25	312694-111ND	70	Lens CD Mount	312799-274
20	F-310 Spring Washer	90008-378	71	CD Lens Ass'y	312694-037
21	Screw, 6-32 x 3/8	312694-392ND	73	2-64 x 7/32 LG Spline Set Screw (8)	312694-310ND
22	Bearing Screw (4)	312694-118	74	Guide Bar	312694-106
23	F-306 Washer	90008-369	75	Screw, 8-36 x 9/32	312694-327ND
24	Lock Nut	312694-322	76	Lens E - F Ass'y	312694-029
25	Gear Drive Support	312799-107	77	Objective Cover	312694-354
26	Ball .1562φ (4)	312694-152ND	78	Objective Driven Gear R.H.	312694-264
27	Lead Screw Mount	312694-339	79	Pivot Screw B	312799-171ND
28	Screw, 6-40 x 3/8	312694-328ND	80	Mirror Clip C	312694-341
29	F-306 Washer	90008-369	81	Screw, 6-40 x 3/8	312694-324ND
30	Lens E - F Ass'y	312694-029	82	Mirror C	312694-040
31	Retainer	312692-102	83	Mirror D	312694-041
32	E - F Lens Mount	312694-340			
33	Screw, 2-56 x 3/16 (2)	312694-302ND			
34	Retainer	312692-102			
35	Cover Gasket	312694-312			
36	Screw, 6-40 x 29/32	312694-325ND			
37	Screw, 6-32 x 9/32	312694-323ND			
38	Pivot Screw "A"	312694-144			
39	F-309 Washer	90008-377			
40	F-108 Washer	90008-281			
41	Screw, 4-48 x 3/16	312694-326ND			
42	F-120	90008-125			
43	EP Mount Right (Refer to Key #14)	312799-116			
	*EP Mount Left (Not Exploded)	312799-115			
44	Mirror A	312694-038			
45	2-64 x 1/8 LG Screw	312694-301ND			
46	Mirror Clip C	312694-341			
47	Mount AB	312799-272			
48	Objective Driven Gear (2)	312694-121			
49	Gear Lock Nut	312694-169			
50	Cell Mount B & Pad Ass'y	312694-351			
52	AB Lens Ass'y	312694-023			

\*Sold in Ass'y Only

**STEREOZOOM 1.0X thru 2.5X VARIABLE POWER POD,  
CAT. NO. 31-26-93**

All parts are similar to those for the 0.7X thru 3.0X Variable Power Pod except

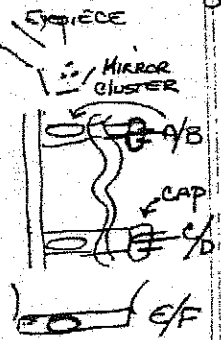
Key	Description	Part No.
9	Mirror Housing	312693-134
53	Magnification Knob Ass'y	312693-129
*57)		
*58)		
*59)	Drive Gear & Shaft Ass'y	312693-132
*60)		

\*Sold in Ass'y Only

# Bausch + Lomb Stereozoom "3"-4" (31-26-94)

1- FOR CHECKING FOR MECHANICAL + OPTICAL ALIGNMENT

a- RESOLUTION - CLEARNESS OF IMAGE



① THE A/B LENS SYSTEM CONTROLS THE LOWEST POWER AND TO GET BEST RESOLUTION LOOSEN RETAINING RING AND ROTATE A/B LENS TO BEST POSITION AND SECURE RING.

② UPON ZOOMING TO HIGH MAGNIFICATION IF EITHER EYEPIECE VIEW IS NOT CLEAR ROTATE E/F LENS TO BEST POSITION + RESECURE RING.

③ IF UNABLE TO GET EITHER HIGH OR LOW IN GOOD RESOLUTION EITHER HIGH OR LOW COULD BE BAD + C/D COULD BE BAD. TO CHECK REMOVE E/F + ZOOM TO LOW AND REVIEW SUBJECT WHILE ROTATING C/D.

b- FOCUS

ON R/S FOCUS AFTER ZOOMING TO HIGHEST MAGNIFICATION, ZOOM TO LOW. IF LOW WILL NOT BE IN FOCUS ADJUST CAP ON A/B BY LOOSENING SCREWS + MOVING CAP UNTIL LOW MAG. IS IN FOCUS WITH ADJUSTING KNOB. AFTER FOCUS ON HIGH ON RIGHT SIDE, KNOB TO REFOCUS NOT TO BE TOUCHED. AFTER R/S HIGH + LOW MAG DONE GO TO 1/2 HIGH MAG + IF NOT RIGHT ADJUST C/E CAP BY TIGHTENING SCREWS + MOVING CAP UP OR DOWN TILL CORRECT THEN GO TO LOW + ADJUST A/B CAP IF NOT RIGHT. IF LOW MAG WON'T COME IN, YOU MAY HAVE TO RESET C/D ON HIGH RIGHT SIDE + START OVER.

\* IF FOCUS FADES OUT BETWEEN HIGH + LOW MAG. - THIS COULD BE CORRECTED BY PUTTING A .005 TO .015 SHIM IN THE UPPER LEFT CORNER OF CAP.

c- CENTERING

① FROM LEFT/SIDE FOCUS ON HIGH, ADJUST SLIDE SO IMAGE RUNS IN STRAIGHT LINE FROM HIGH TO LOW

② ADJUST MIRROR <sup>CLUSTER</sup> SO IMAGE IS INTO WITHIN 1/2 mm. IF THIS DONE, FINAL ADJUSTMENT CAN BE MADE WITH DUST SEAL CAP (#4).

# Bausch + Lomb Stereozoom "3" + "4" (31-26-94)

JMP

- ① CAUSED BY STICKY GREASE ON CAMS
- ② " " " SPRINGS ON CAP MOUNTS + NEEDS SHIMS
- ③ AT TOP OR BOTTOM - ZOOM GEAR NOT MESHING WITH CAM GEAR  
ONE SIDE TURNS BEFORE OTHER. LOOSEN THE TWO SCREWS  
ON GEAR DRIVE SUPPORT (#25). BE SURE TO REGREASE AFTER  
ADJUSTMENT.

FADE OUT ① ON RIGHT SIDE PUT AN .002 SHIM IN UPPER LEFT OF  
CAM CORNER

JPD OUT ① LOOSEN SCREW ON <sup>GUIDE (#74)</sup> BAR MOVE HAIR TO RIGHT + SEE RESOL  
(Interpupillary) IF DOES FINE ... - IF NOT MOVE IN OTHER DIRECTION A HAIR